



OneDollarGlasses
Spiral Manual (II)

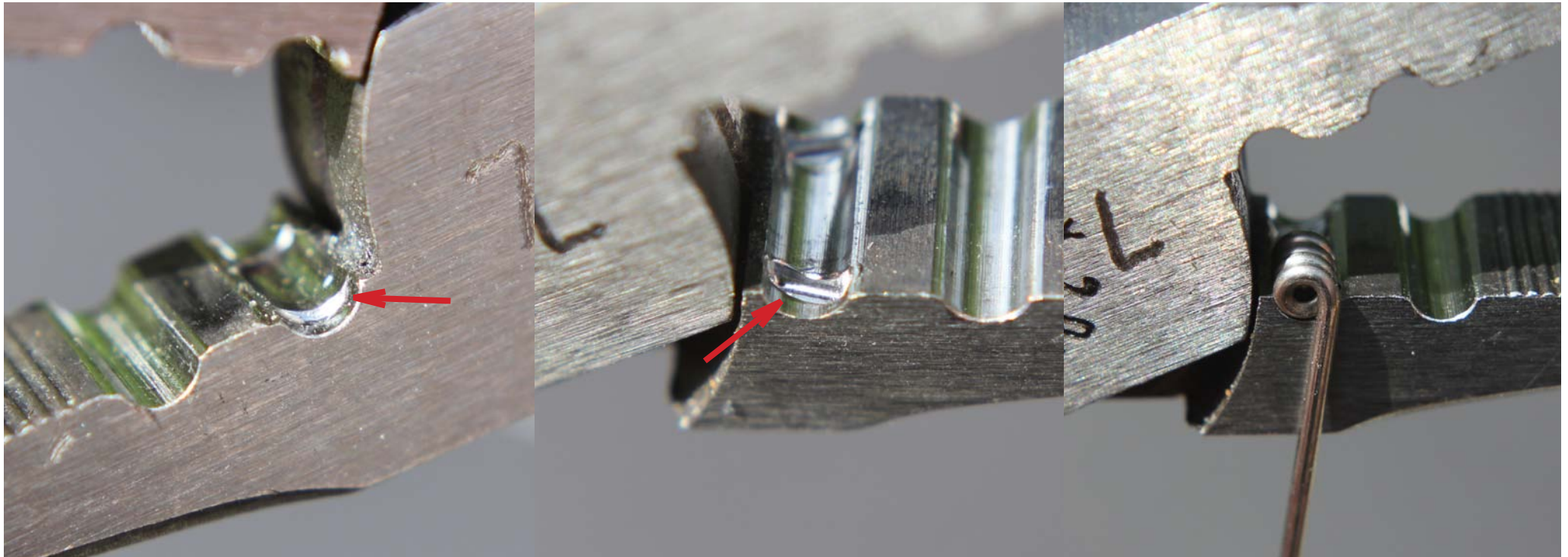
Special plier for compressing the spiral



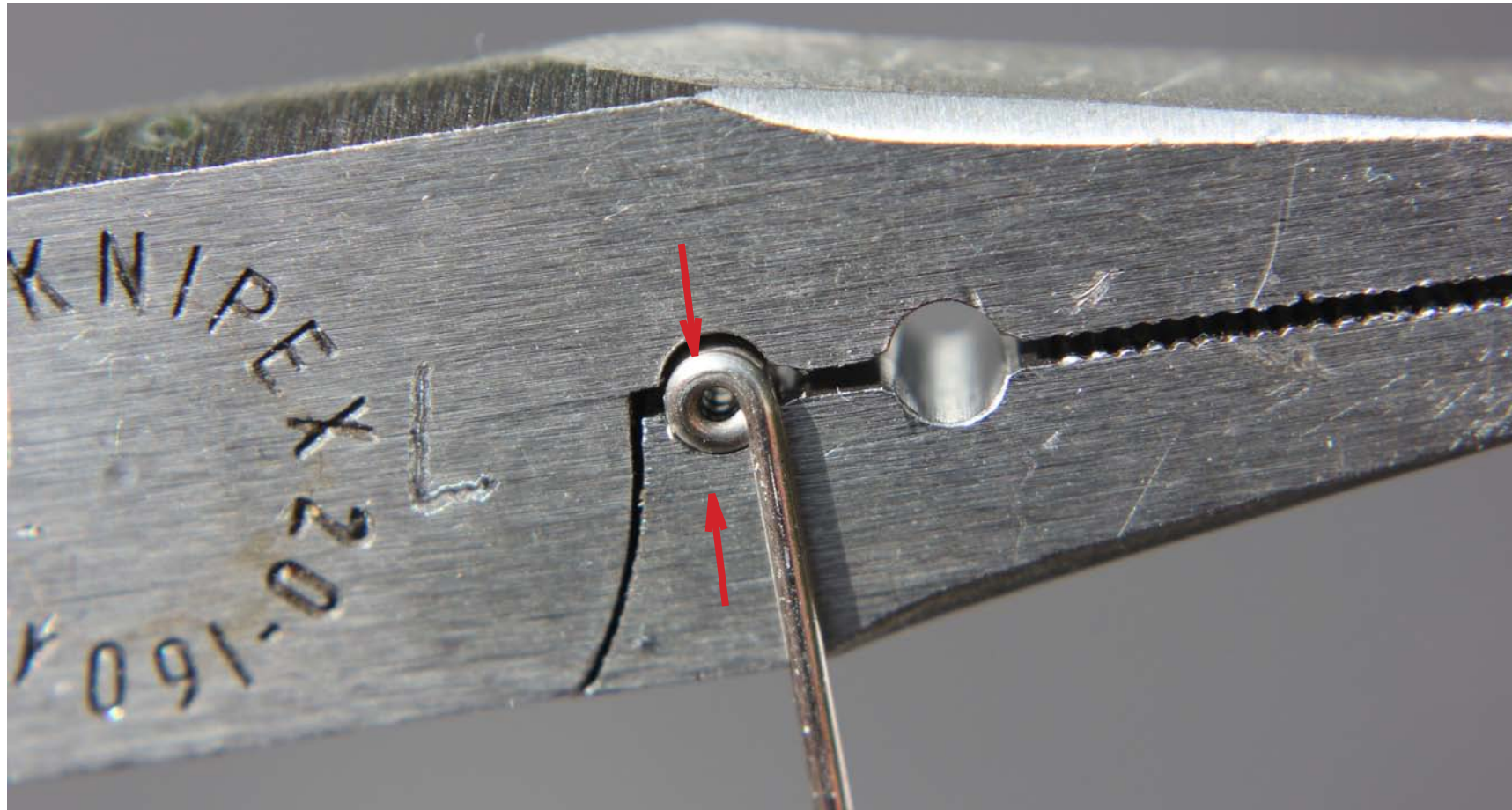
Elevation in in one jaw of the plier.

Deepening in the oppisite jaw of the plier

The spiral is put into the plier



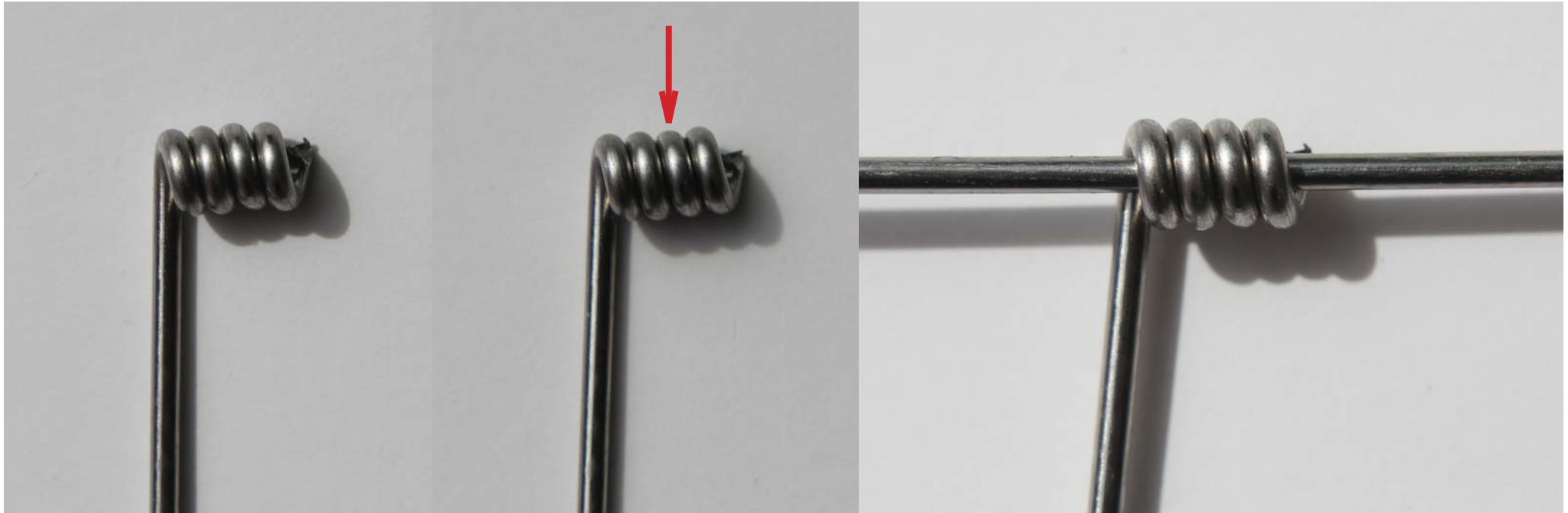
Spiral compressed strongly with the plier.
Only 1 winding of the spiral is pressed out of the row.



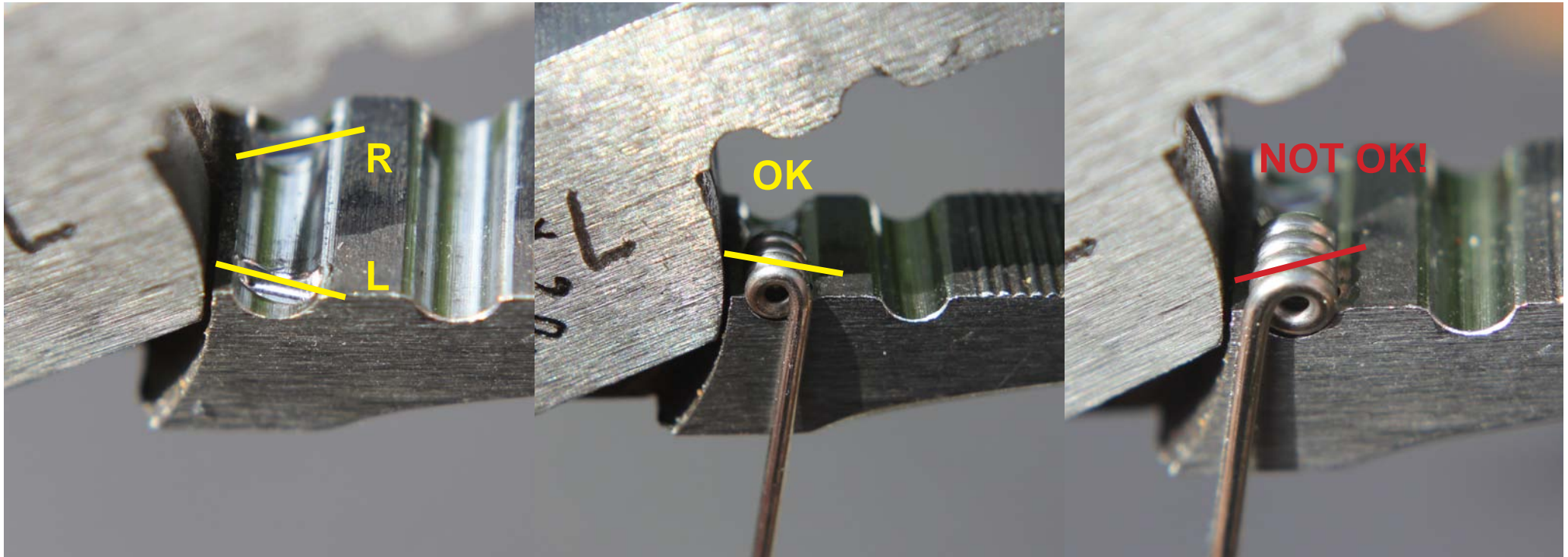
Spiral before compressing

Spiral after compressing: One winding is pressed downwards out of the row (about 0.1 mm).

Spiral fits very tight on the straight wire



Attention: There are two different sides of the plier. The left spiral must be put into the left side, the right spiral must be put into the right side.



Left side of the plier.

Right side of the plier.

